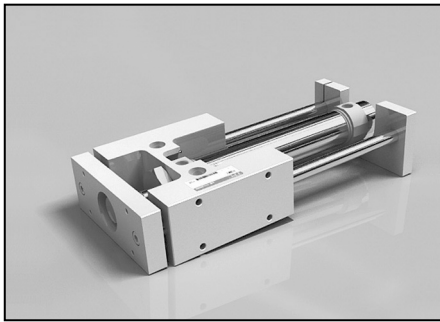


# AGX / GX Series

Guide cylinder with guide unit / Bore size : Ø20, Ø25, Ø32, Ø40

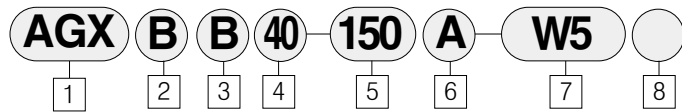
Actuator  
Cylinder

AGX/GX Series



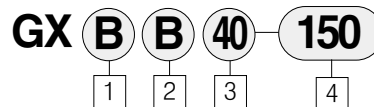
- Compact integration of AGX/GX series cylinder with guide rods. unit resists lateral loading and provides precise, non-rotating motion
- The AGX/GX series is equipped with a standard magnet for auto switch capability

## How to order



- |   |   |   |
|---|---|---|
| <p><b>1</b> Type<br/>Guide cylinder<br/>(Built-in magnet)</p> <p><b>2</b> Type of bearing<br/>B : Bushing type</p> <p><b>3</b> Mounting<br/>B : Standard</p> <p><b>4</b> Bore size<br/>20 : Ø20mm</p> | <p>25 : Ø25mm<br/>32 : Ø32mm<br/>40 : Ø40mm</p> <p><b>5</b> Cylinder stroke(mm)<br/>* Refer to the above table</p> <p><b>6</b> Cushion<br/>Blank : Rubber cushion<br/>A : Air cushion</p> | <p><b>7</b> Auto switch<br/>(Band mounted type / Grommet)<br/>Blank : None<br/>W5 : Reed switch<br/>(Lead wire of 0,5m)<br/>W5L : Reed switch<br/>(Lead wire of 0,5m)</p> <p><b>8</b> Number of switches<br/>Blank : 2 pcs.<br/>S : 1pc.<br/>N : N pcs.</p> |
|---|---|---|

## How to order guide unit



- |  |   |   |
|--|---|---|
| <p><b>1</b> Type of bearing<br/>B : Bushing type</p> <p><b>2</b> Mounting<br/>B : Standard</p> | <p><b>3</b> Bore size<br/>20 : Ø20mm<br/>25 : Ø25mm<br/>32 : Ø32mm<br/>40 : Ø40mm</p> | <p><b>4</b> Cylinder strokes(mm)<br/>Ø20, Ø25: 25, 50, 75, 100, 125, 150, 200, 250, 300<br/>Ø32 : 25, 50, 75, 100, 125, 150, 200, 250, 300, 350, 400<br/>Ø40 : 25, 50, 75, 100, 125, 150, 200, 250, 300, 350, 400, 450, 500</p> |
|--|---|---|

## Specifications

Fluid	Air
Action	Double acting
Proof pressure	15kgf/cm <sup>2</sup> (213 psi)
Max. operating pressure	9.9kgf/cm <sup>2</sup> (140 psi)
Min. operating pressure	0.5kgf/cm <sup>2</sup> (7 psi)
Ambient and fluid temperature	-10°C~+70°C (14~160°F)(Anti-freezing)
Lubrication	Non-lube
Thread tolerance	KS 2 Class
Stroke tolerance	+1.4 0 mm

## Air cylinder + guide unit

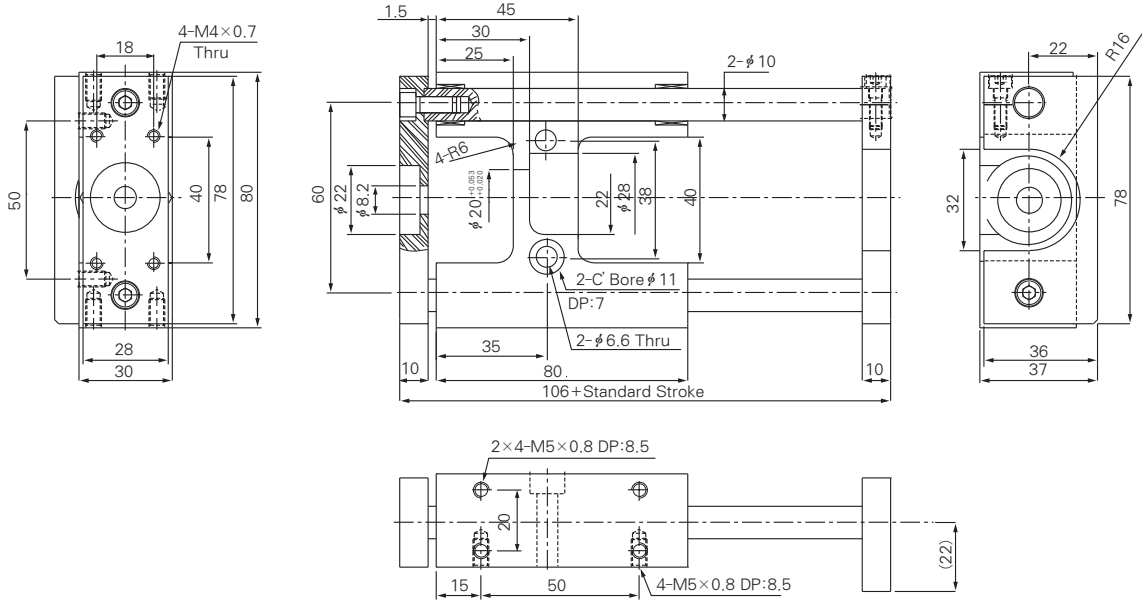
Action	Series	Bore size (mm)	Port size Rc(PT)	Standard stroke (mm)	Description	Operating pressure kgf/cm <sup>2</sup> (psi)
Air cylinder(AX) + Guide unit(GX) 	AGX	Ø20	1/8	25, 50, 75, 100, 125, 150, 200, 250, 300	Bushing	0.5~9.9(7~140)
		Ø25				
		Ø32	1/4	25, 50, 75, 100, 125, 150, 200, 250, 300, 350, 400		
		Ø40				

Guide Cylinder : Series AGX

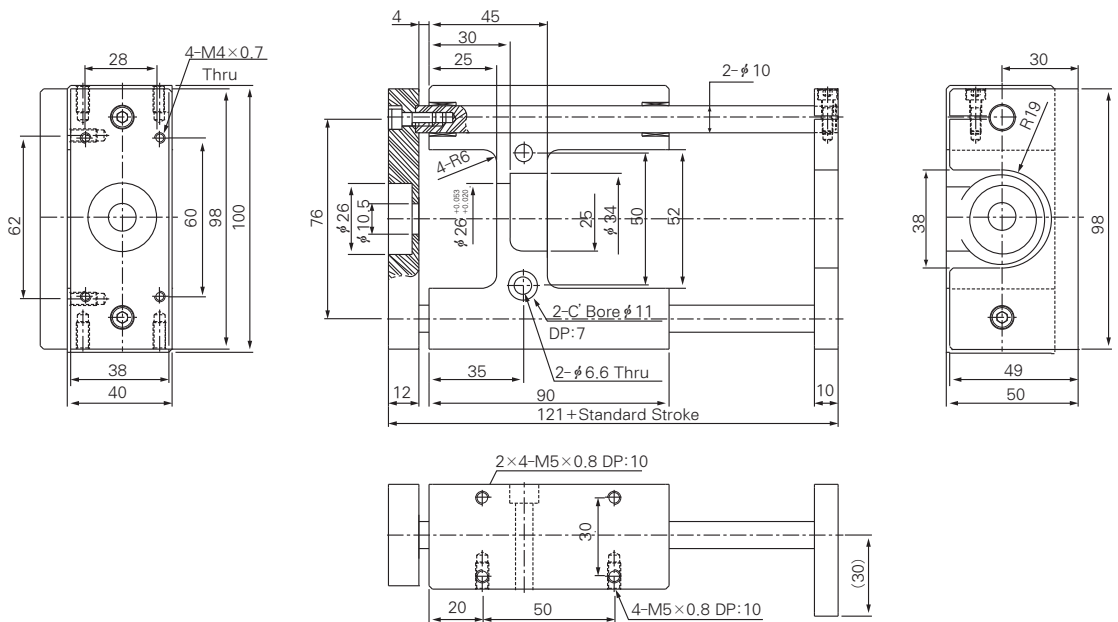
Unit : mm

- ACP
- APM
- AS
- AX
- AM2
- AM
- AL ALX
- AQ ADQ
- AQ2 ADQ2
- AJ AJM
- ABK
- ACK1
- NSK
- AG
- NGQ
- AGX GX**
- NP
- ADR
- AMR
- NDM
- ARD
- NST
- AST
- ASTH
- NLCD
- NLCS

φ 20 (AGXBB20- \* \* )



φ 25 (AGXBB25- \* \* )

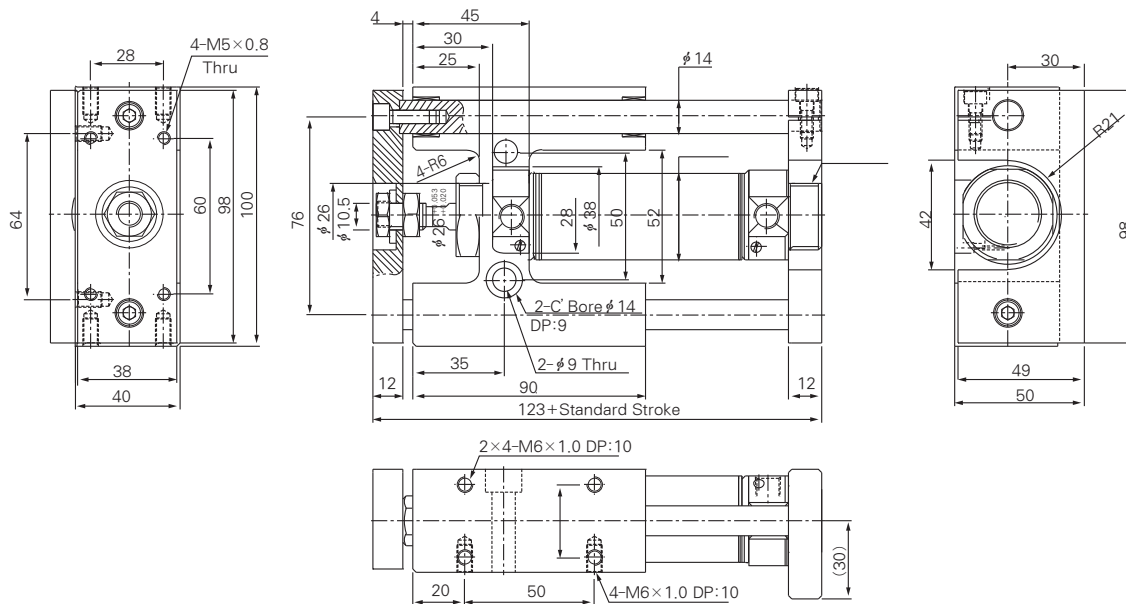


# Series AGX/GX

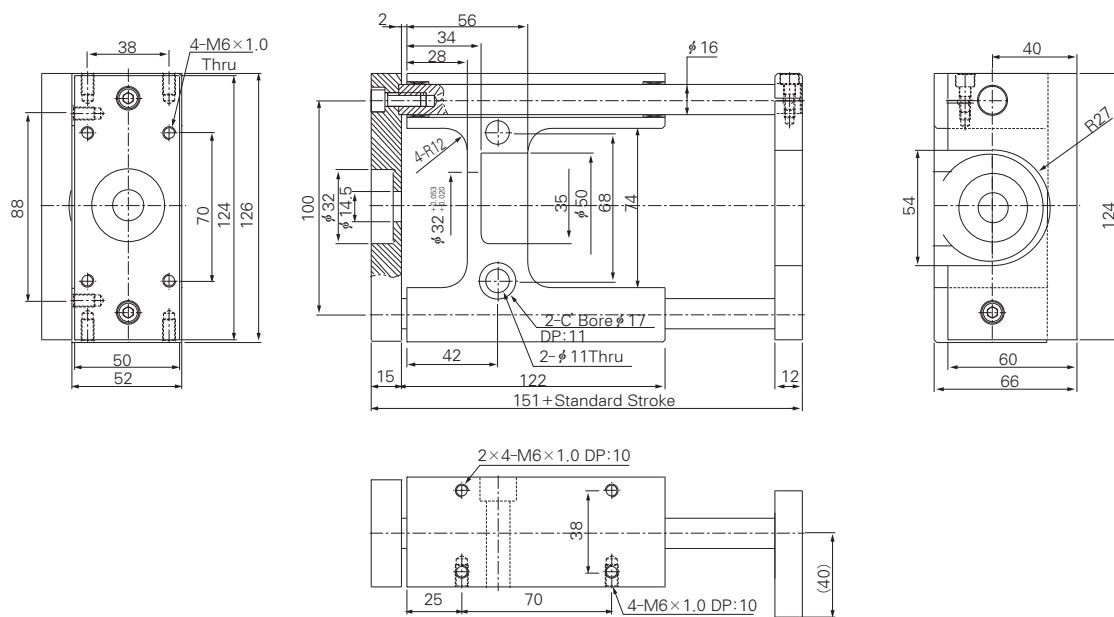
## Guide Cylinder : Series AGX

Unit : mm

### φ 32 (AGXBB32- \* \* \*)



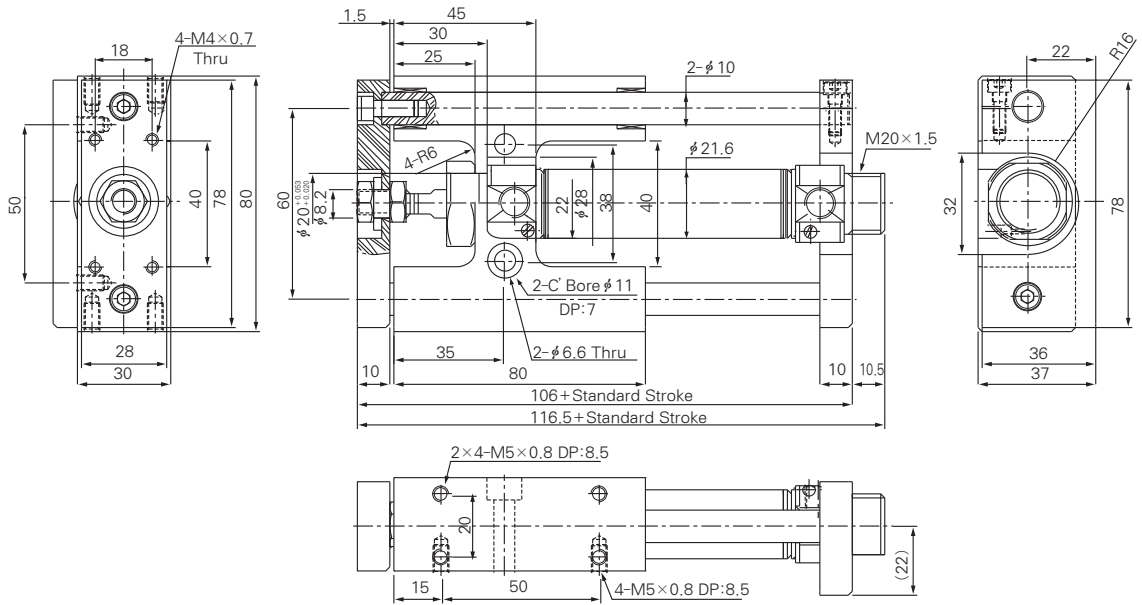
### φ 40 (AGXBB40- \* \* \*)



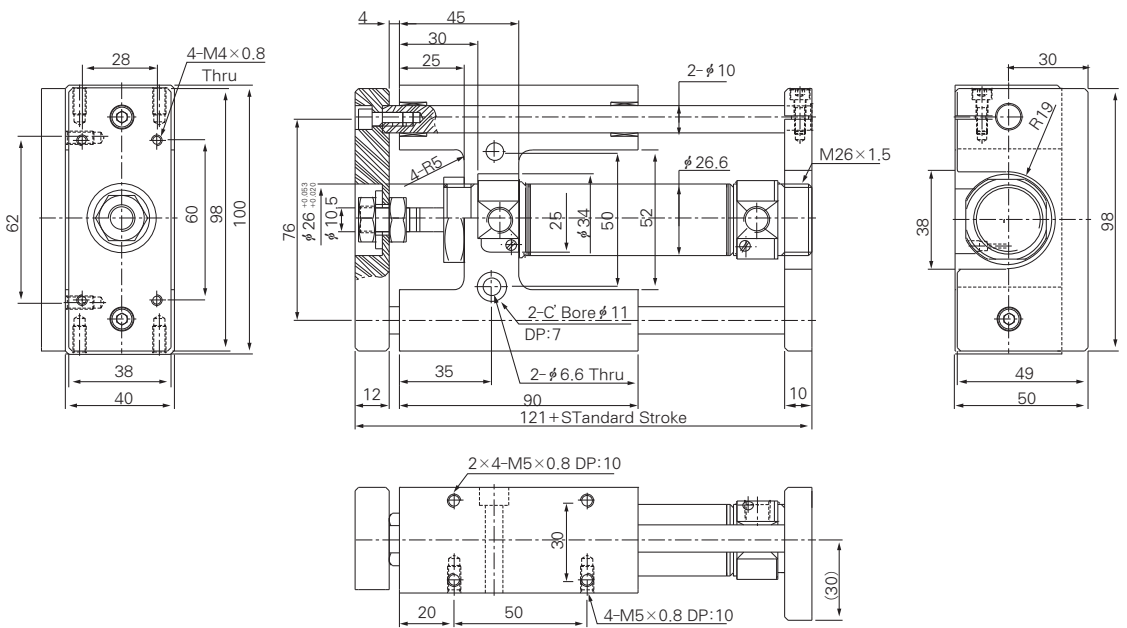
Guide Unit

Unit : mm

φ20 (AGXBB20- \* \*)



φ25 (AGXBB25- \* \*)



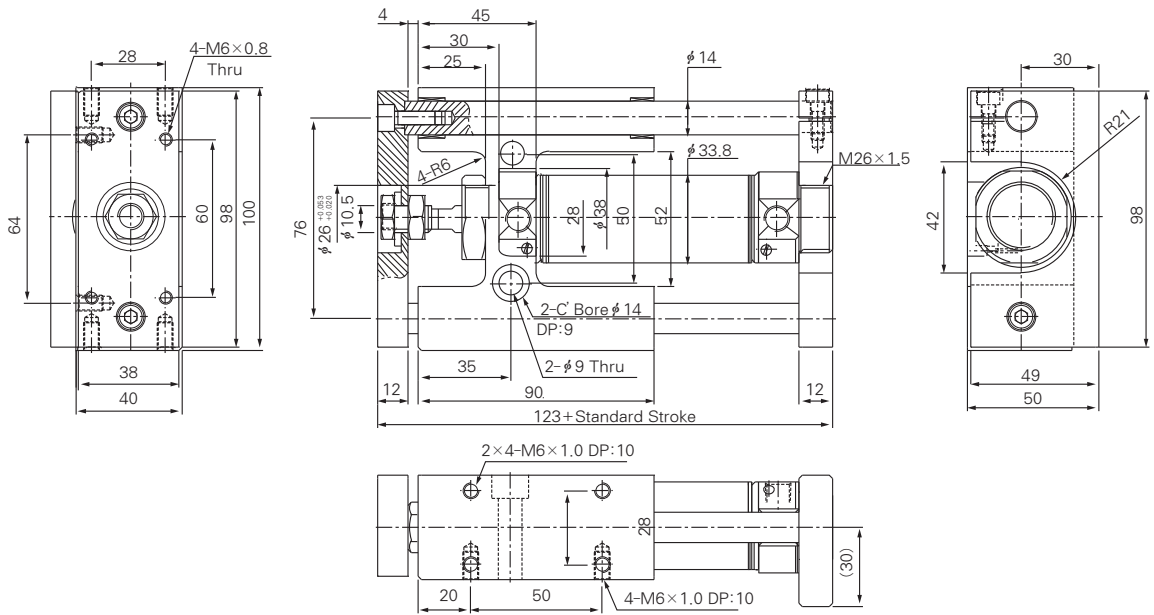
- ACP
- APM
- AS
- AX
- AM2
- AM
- AL
- ALX
- AQ
- ADQ
- AQ2
- ADQ2
- AJ
- AJM
- ABK
- ACK1
- NSK
- AG
- NGQ
- AGX**
- GX**
- NP
- ADR
- AMR
- NDM
- ARD
- NST
- AST
- ASTH
- NLCD
- NLCS

# Series AGX/GX

## Guide Unit

Unit : mm

### φ 32 (AGXBB32- \* \* \*)



### φ 40 (AGXBB40- \* \* \*)

