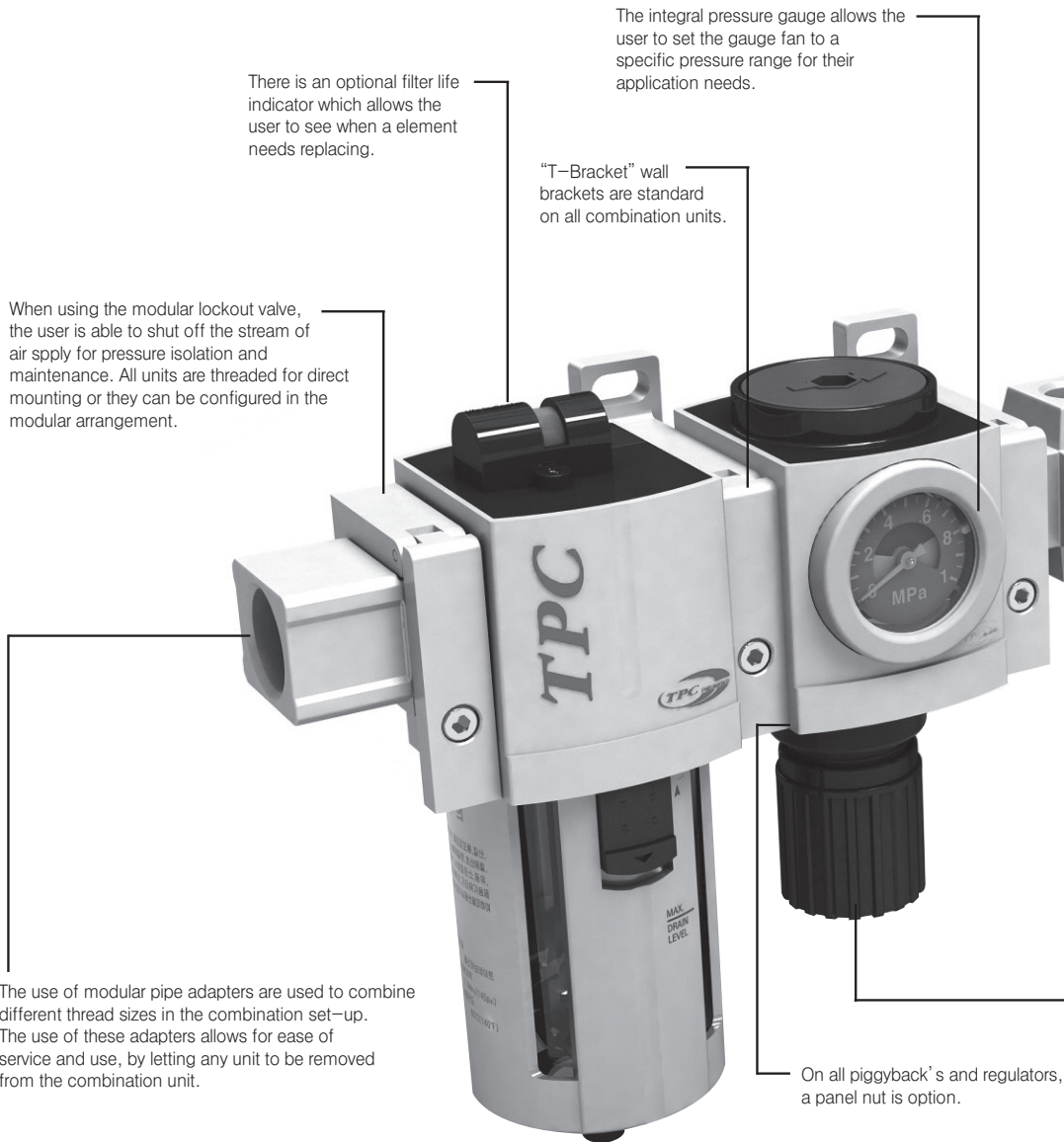


■ Modular Type Air Combination



There is an optional filter life indicator which allows the user to see when a element needs replacing.

The integral pressure gauge allows the user to set the gauge fan to a specific pressure range for their application needs.

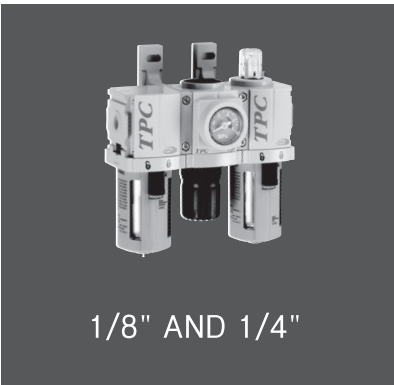
"T-Bracket" wall brackets are standard on all combination units.

When using the modular lockout valve, the user is able to shut off the stream of air supply for pressure isolation and maintenance. All units are threaded for direct mounting or they can be configured in the modular arrangement.

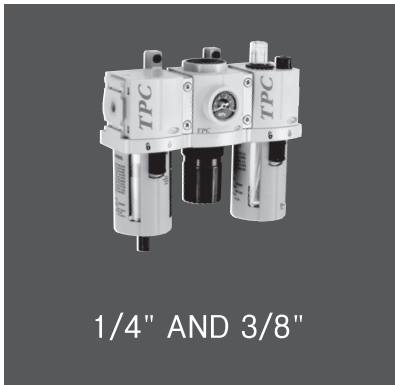
The use of modular pipe adapters are used to combine different thread sizes in the combination set-up. The use of these adapters allows for ease of service and use, by letting any unit to be removed from the combination unit.

On all piggyback's and regulators, a panel nut is option.

PC2 Series

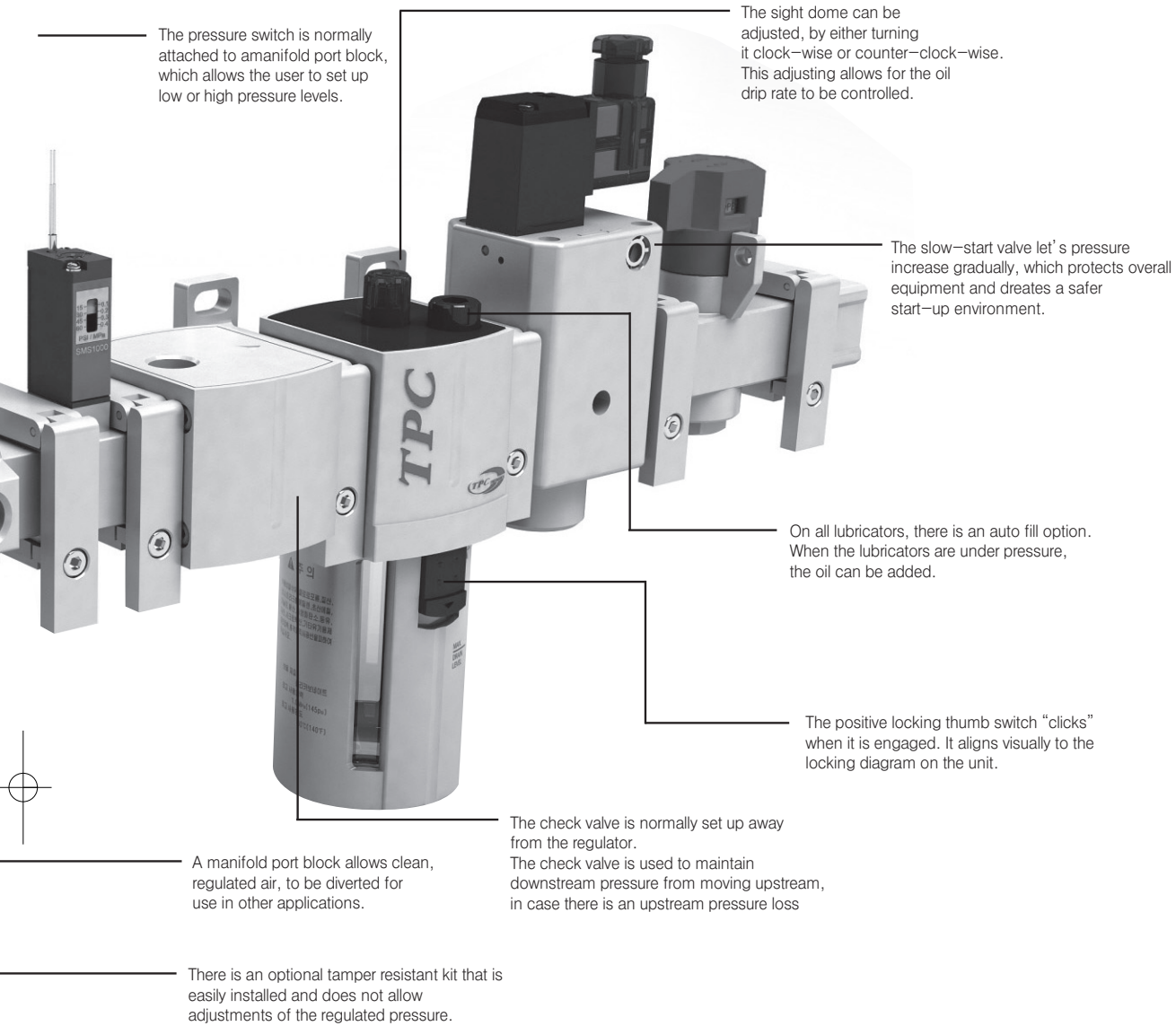


PC3 Series



PC4 Series





The pressure switch is normally attached to a manifold port block, which allows the user to set up low or high pressure levels.

The sight dome can be adjusted, by either turning it clock-wise or counter-clock-wise. This adjusting allows for the oil drip rate to be controlled.

The slow-start valve let's pressure increase gradually, which protects overall equipment and creates a safer start-up environment.

On all lubricators, there is an auto fill option. When the lubricators are under pressure, the oil can be added.

The positive locking thumb switch "clicks" when it is engaged. It aligns visually to the locking diagram on the unit.

A manifold port block allows clean, regulated air, to be diverted for use in other applications.

The check valve is normally set up away from the regulator. The check valve is used to maintain downstream pressure from moving upstream, in case there is an upstream pressure loss

There is an optional tamper resistant kit that is easily installed and does not allow adjustments of the regulated pressure.

PC5 Series



3/4" AND 1"

PFH Series



1/8", 1/4", 3/8"
1/2", 3/4" AND 1"

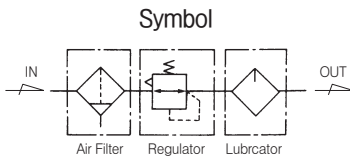
PPH Series



1/4", 3/8" AND 1/2"

Series PC3

Combination 1/4" and 3/8"



Standard Specifications

Fluid	Air	
Max. Operating Pressure (MPa)	1.0(140psi)	
Proof Pressure (MPa)	1.5(200psi)	
Set Pressure (MPa)	Standard	0.05~1.0(7~140psi)
	Made to Order Specifications	0.05~0.2(7~30psi), 0.05~0.4(7~60psi), 0.05~1.2(7~170psi)
Ambient and Fluid Temperature (°C)	-5~60(23~140°F) (NON-freezing)	
Flow Capacity ※ (N ℓ /min)	1/4"	1,700(60scfm)
	3/8"	2,400(85scfm)
Filtration (μm)	5	
Construction	Relieving Style	
Recommended Oil	ISO VG32(Turbine Oil 1 Class)	
Port Size for Pressure Gauge (Rc (PT), NPT)	1/8"	
Weight (kg)	0.99(1.08lb)	

※ Test conditions : Supply pressure 0.7MPa(100psi), pre-set pressure 0.6MPa(90psi)

How to Order

PC 3 A — * 03 D G — * — C1M1Z5

Series
(Combination Unit)

Components

Blank	Filter-Regulator-Lubricator
A	Piggyback-Lubricator
B	Filter-Regulator
C	Filter-Coalescing Filter(0,3)-Regulator
D	Piggyback-Coalescing Filter(0,3)
E	Filter-Coalescing Filter(0,01)-Regulator
F	Piggyback-Coalescing Filter(0,01)

Thread

Blank	Rc(PT)
N	NPT
G	G(PF)

Port Size

02	1/4
03	3/8

Drain Option

Blank	Manual Push Drain
D	Auto Drain (N.O Type)

Note1)

Note1) Min. operating pressure is 0.15MPa (20psi) for Auto Drain (N.O Type)

Pressure Gauge

Symbol	Description	Pressure Range
Blank	None	
G	Integral Pressure Gauge (W/Limit Indicator)	1.0MPa(140psi)
P	Pressure Gauge	1.0MPa(140psi)
P2	Pressure Gauge	0.2MPa(30psi)
P4	Pressure Gauge	0.4MPa(60psi)

Accessories

Symbol	Port Size	Description	Applicable Series
C1	1/8"	Check Valve	PC2~PC3
C2	1/4"		PC2~PC4
C3	3/8"		PC4
H	-	Shut-off Valve	PC2~PC5
M1	1/8"	Modular Manifold Block Kit	PC2~PC3
M2	1/4"		PC2~PC4
M3	3/8"		PC4
V	-	Lock-out Valve	PC2~PC5
W	-	Modular Pipe Adapter Kit	PC2~PC5
Z1	-	Pressure Switch, AC110V	PC2~PC5
Z5	-	Pressure Switch, DC24V	PC2~PC5

※ Refer to page 900 for how to attach bracket & how to combine the accessories
 ※ When specifying more than one symbol, indicate them alphabetically Ex) CIMIZ

Other Option

Symbol	Description	Applicable Series
Blank	Set at 0 to 1.0 MPa, 5μm (Standard)	
2	Set at 0 to 0.2 MPa	K Built-in Check Valve Note2)
4	Set at 0 to 0.4 MPa	R Flow Direction : Right-Left
12	Set at 0 to 1.2 MPa	T Tamper Resistant Kit Note2,3)
E	Non-Relieving Type	U Regulator (Top Mounted)
J2	Filter element - 20μm	XC16 Copper-free
J4	Filter element - 40μm	

Note2) Refer to page 935 for Built-in Check Valve, Tamper Resistant Kit.

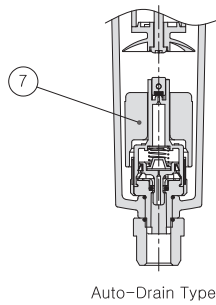
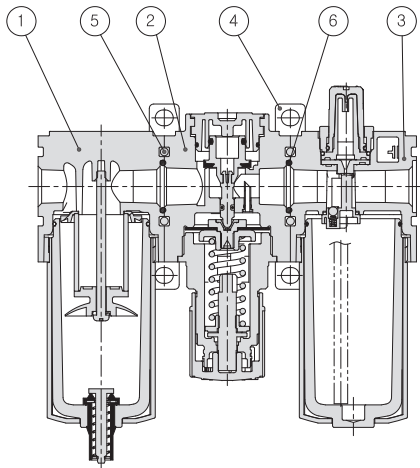
Note3) Separately packed, Not assembled.

※ If ordering more than one option, indicate symbols numerically then alphabetically Ex) 2EK

※ Over Max. pressure value can be set.

Series PC3

Construction



Auto-Drain Type

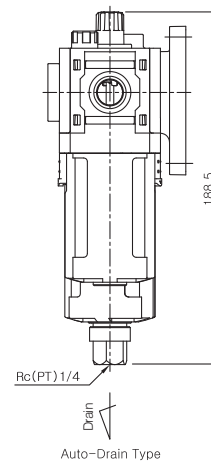
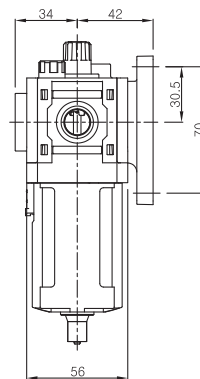
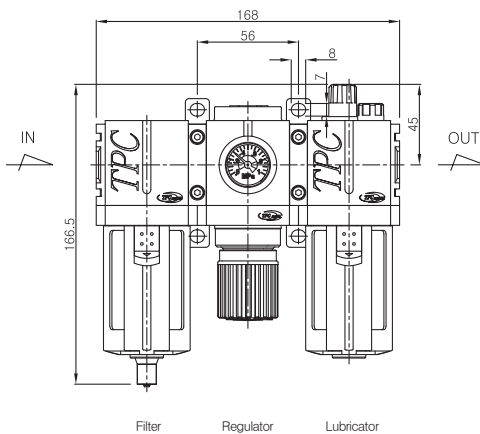
Main Parts/Parts List

No.	Description	Material	Remark
①	Filter Ass'y	-	
②	Regulator Ass'y	-	
③	Lubricator Ass'y	-	
④	Bracket Ass'y	Aluminum	
⑤	Connecting Screw	Carbon Steel	

Replacement Parts/Parts List

No.	Description	Material	Part No.
⑥	Combination O-ring	NBR	TAR4000-07-6001
⑦	Auto-drain ass'y	-	TAF3000-04A-6008

PC3 Dimensions



PC2

PF2

PR2

PL2

PP2

PC3

PF3

PR3

PL3

PP3

PC4

PF4

PR4

PL4

PP4

PC5

PF5

PR5

PL5

PP5

PFH(U)2~
PFH(U)5

PPH(U)3~
PPH(U)4

PLV

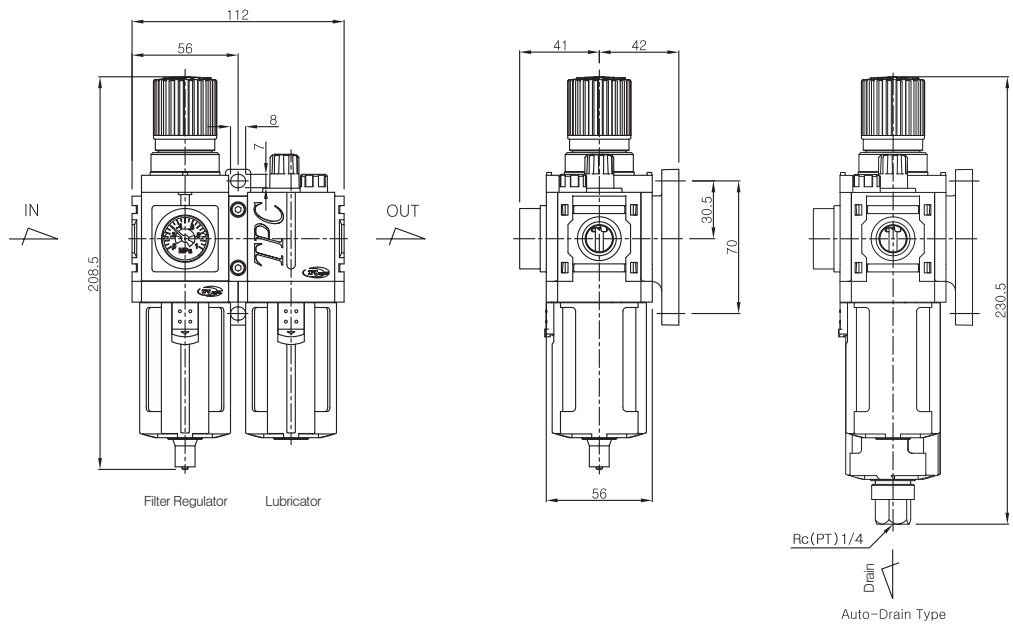
PSH

PCV

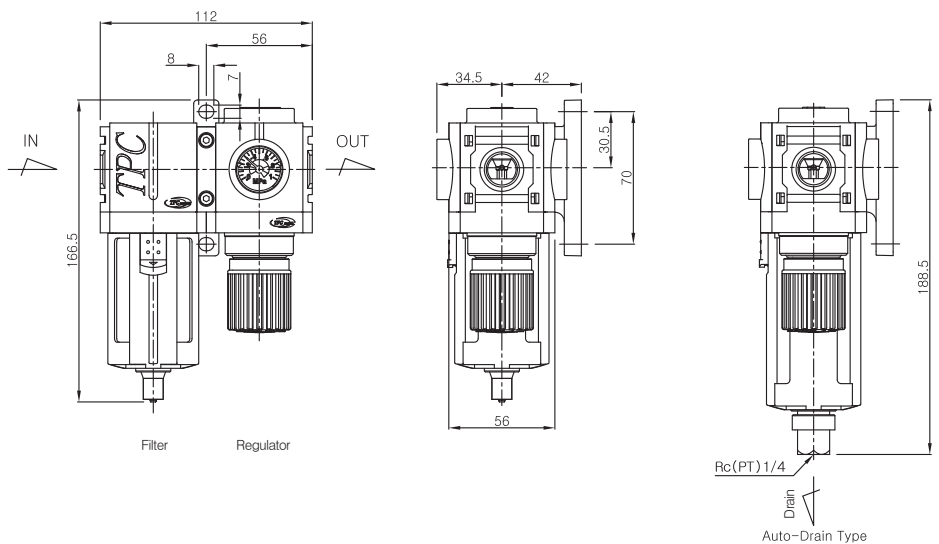
MB

Series PC3

PC3A Dimensions



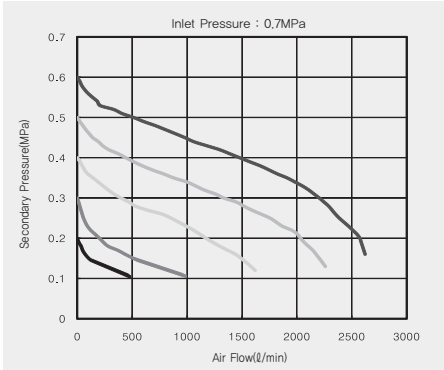
PC3B Dimensions



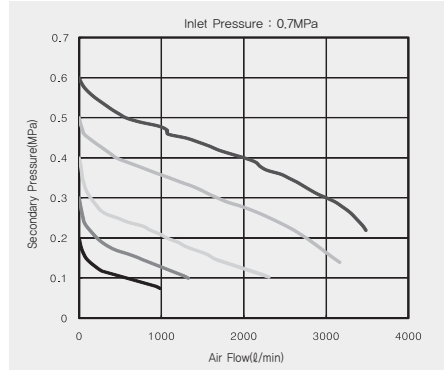
Series PC3

PC3 Series Pressure Characteristics

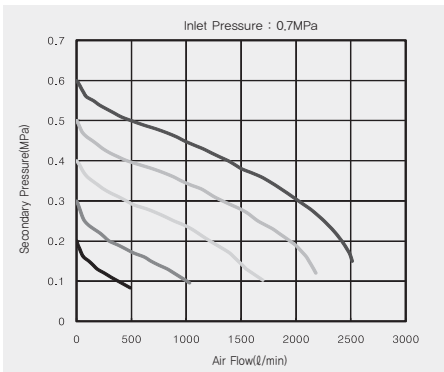
▶ 1/4" PC3



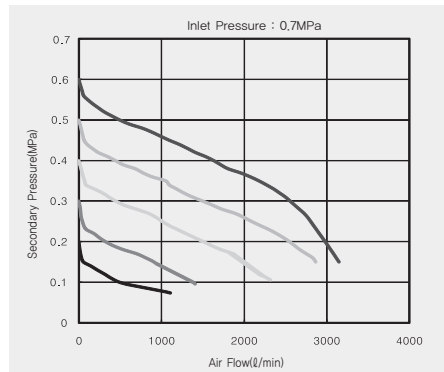
▶ 3/8" PC3



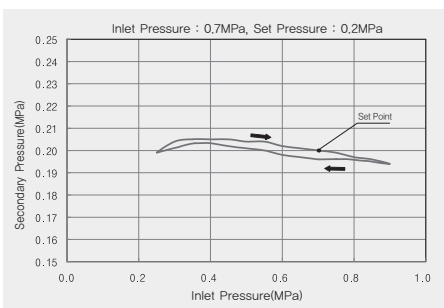
▶ 1/4" PC3A



▶ 3/8" PC3A



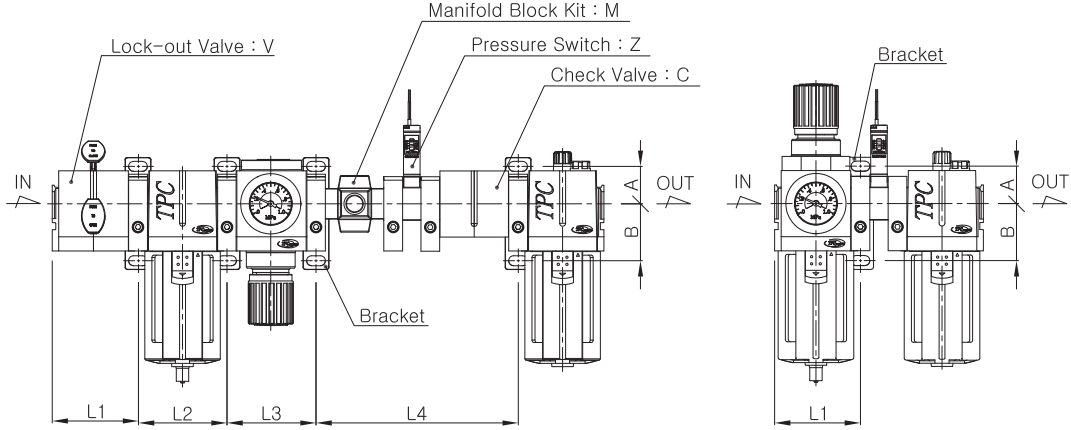
PC3 Series Pressure Characteristics



- PC2
- PF2
- PR2
- PL2
- PP2
- PC3**
- PF3
- PR3
- PL3
- PP3
- PC4
- PF4
- PR4
- PL4
- PP4
- PC5
- PF5
- PR5
- PL5
- PP5
- PFH(U)2~
PFH(U)5
- PPH(U)3~
PPH(U)4
- PLV
- PSH
- PCV
- MB

Series PC2~PC5

The Mounting Position of Bracket



Attachment Type	C			M			V			Z			CM			CV				CZ			MV			
	L1	L2	L3	L1	L2	L3	L1	L2	L3	L1	L2	L3	L1	L2	L3	L1	L2	L3	L4	L1	L2	L3	L1	L2	L3	L4
PC2	40	40	40	40	40	40	40	40	40	40	40	12	40	40	80	40	40	40	40	40	40	52	40	40	40	40
PC3	56	56	56	56	56	49	56	56	56	56	56	13	56	56	105	56	56	56	56	56	56	69	56	56	56	49
PC4	72.7	72.7	74.4	72.7	75.4	65.4	72.7	75.4	75.4	72.7	75.4	31.4	72.7	75.4	139.8	72.7	75.4	75.4	74.4	72.7	75.4	105.8	72.7	75.4	75.4	65.4
PC5	-	-	-	-	-	-	92.7	95.4	95.4	92.7	95.4	36.4	-	-	-	-	-	-	-	-	-	-	-	-	-	-

Attachment Type	MZ			VZ				CMV				CMZ			CVZ				MVZ				CMVZ			
	L1	L2	L3	L1	L2	L3	L4	L1	L2	L3	L4	L1	L2	L3	L1	L2	L3	L4	L1	L2	L3	L4	L1	L2	L3	L4
PC2	40	40	52	40	40	40	12	40	40	40	80	40	40	92	40	40	40	52	40	40	40	40	52	40	40	92
PC3	56	56	62	56	56	56	13	56	56	56	105	56	56	118	56	56	56	69	56	56	56	56	69	56	56	118
PC4	72.7	75.4	96.8	72.7	75.4	75.4	31.4	72.7	75.4	75.4	139.8	72.7	75.4	171.2	72.7	75.4	75.4	105.8	72.7	75.4	75.4	96.8	72.7	75.4	75.4	171.2
PC5	-	-	-	92.7	95.4	95.4	36.4	-	-	-	-	-	-	-	-	-	-	-	-	-	-	-	-	-	-	-

Attachment Type	C		V		Z		CV		CZ		VZ		CVZ		
	L1	L2	L1	L2	L1	L1	L2	L3	L1	L2	L1	L2	L1	L2	L3
PC2A	40	40	40	40	40	40	40	40	52	40	40	40	40	40	52
PC3A	56	56	56	56	56	56	56	56	69	56	56	56	56	56	69
PC4A	72.7	74.4	72.7	75.4	72.7	72.7	75.4	74.4	72.7	105.8	72.7	75.4	72.7	75.4	105.8
PC5A	-	-	-	-	-	-	-	-	92.7	95.4	-	-	-	-	-

Attachment Type	M			V			Z			MV			MZ			VZ			MVZ	
	L1	L2	L3	L1	L2	L3	L1	L2	L3	L1	L2	L3	L1	L2	L3	L1	L2	L3	L1	L2
PC2B	40	40	40	40	40	40	40	40	40	40	40	40	40	40	40	40	40	40	40	40
PC3B	56	56	56	56	56	49	56	56	56	56	56	56	56	56	56	56	56	56	56	56
PC4B	72.7	75.4	72.7	75.4	72.7	75.4	72.7	75.4	75.4	72.7	75.4	72.7	75.4	75.4	72.7	75.4	75.4	72.7	75.4	75.4
PC5B	-	-	92.7	95.4	92.7	95.4	-	-	-	-	-	92.7	95.4	95.4	-	-	-	-	-	-

L1 : Form inlet to the mounting hole of 1st bracket
 L2 : Form the mounting hole of 1st bracket to 2nd bracket' s
 L3 : Form the mounting hole of 2nd bracket to 3rd bracket' s
 L4 : Form the mounting hole of 3rd bracket to 4th bracket' s
 For the size of A and B, please refer to the dimensions.