

# PC 8~9 Series

Combination 1 1/4", 1 1/2", 2"

Air preparation unit

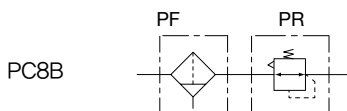
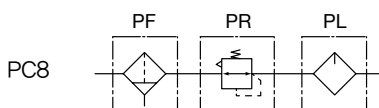
PC 8~9 Series



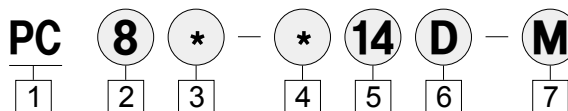
PC 8



PC 8B



## How to Order



### 1 Series(Combination Unit)

2 Body Size  
8 : 1 1/4, 1 1/2  
9 : 2

3 Combination  
Blank : Filter-Regulator-Lubricator  
B : Filter-Regulator

4 Thread  
Blank : Rc  
N : NPT  
G : G(PF)

5 Port Size  
12 : 1 1/4  
14 : 1 1/2  
20 : 2

### 6 Accessory Option

Blank : None / Manual drain  
D : Auto drain

Symbol	Drain connector
D	One-touch fitting(Ø6mm)
Dn	Nipple(PT 1/8)

P : Gauge

### 7 Bowl

Blank	PC bowl
M	Metal bowl with pipe type sight glass

## Specifications

Fluid	Pressed Air
Max.operating pressure(MPa)	10bar (1,0MPa)
Proof pressure(MPa)	15bar (1,5MPa)
Ambient and fluid temperature (°C)	-5~60(With no freezing)
Pressure range	0,5~8,5bar (0,05~0,85Mpa)
Filtration rating(µm)	5 (Option : 40)
Recommended fluid	ISO VG32(Class 1 turbine oil)
Construction	Internal pilot relieving type (pilot air is always bleeding)
Port size	1/4

# PF 8~9 Series

Filter 1 1/4", 1 1/2", 2"

Air preparation unit

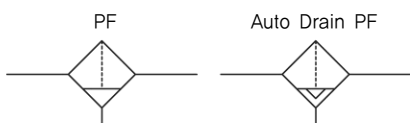
PF 8~9 Series



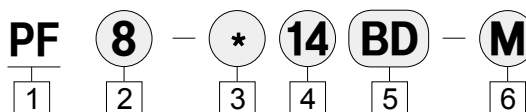
PF 8

PF 9

Symbol



## How to Order



### 1 Series(Filter Unit)

2 Body Size  
8 : 1 1/4, 1 1/2  
9 : 2

3 Thread  
Blank : Rc  
N : NPT  
G : G(PF)

### 4 Port Size

12 : 1 1/4  
14 : 1 1/2  
20 : 2

### 5 Accessory Option

Blank : None / Manual drain  
B : Bracket  
D : Auto drain

Symbol	Auto drain type	Drain connector
D	Float	One-touch fitting(Ø6mm)
Dn	Float	Nipple(PT 1/8)

### 6 Bowl

Blank	PC bowl
M	Metal bowl with pipe type sight glass

## Specifications

Port size	PF 8	1 1/4, 1 1/2
	PF 9	2
Fluid	Pressed Air	
Max.operating pressure(MPa)	10bar (1,0MPa)	
Proof pressure(MPa)	15bar (1,5MPa)	
Ambient and fluid temperature (°C)	-5~60(With no freezing)	
Filtration rating(µm)	5 (Option : 40)	
Material of bowl	Polycarbonate (Option : ALDC)	