

Series **PL3**

Lubricator 1/4" and 3/8"

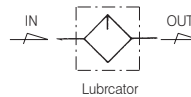


Standard Specifications

Fluid	Air	
Max. Operating Pressure (MPa)	1.0(140psi)	
Proof Pressure (MPa)	1.5(200psi)	
Min Operation Flow (N ℓ /min)	40(3/8 ~)	
Bowl Capacity (cm ³)	56(1.89oz)	
Ambient and Fluid Temperature (°C)	-5~60(23~140°F) (Non-freezing)	
Flow Capacity ※ (N ℓ /min)	1/4 ~	2,100(74scfm)
	3/8 ~	3,100(109scfm)
Bowl Material	Polycarbonate	
Bowl Guard Material	Nylon	
Recommended Oil	ISO VG32(Turbine Oil 1 Class)	
Weight (kg)	0.26(0.57lb)	

※ Test conditions : Supply pressure 0.6MPa(100psi), Pressure drop 0.05MPa(90psi)

Symbol



How to Order

PL 3 — * 03 B — *

Series (Lubricator Unit) — **PL 3**

Thread — *** 03**

Blank	Rc(PT)
N	NPT
G	G(PF)

Port Size — **03**

02	1/4
03	3/8

Other Option — *****

R	Flow Direction : Right → Left
XC16	Copper-free

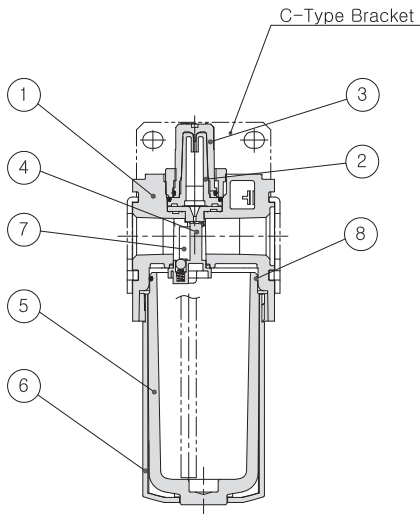
Bracket Option — **B**

Blank	None
B	Bracket

Note1) Separately packed, Not assembled.

Series PL3

Construction



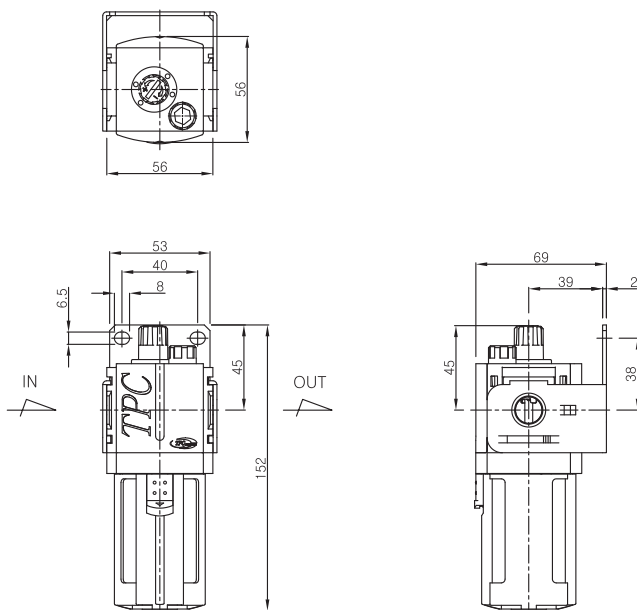
Main Parts/Parts List

No.	Description	Material	Remark
①	Body	Aluminum	
②	Inner Sight dome	Nylon(Transparent)	
③	Outer Sight dome	Nylon(Transparent)	
④	Damper Plate	Acetal	
⑤	Bowl	Polycarbonate	
⑥	Bowl Guard	Nylon	

Replacement Parts/Parts List

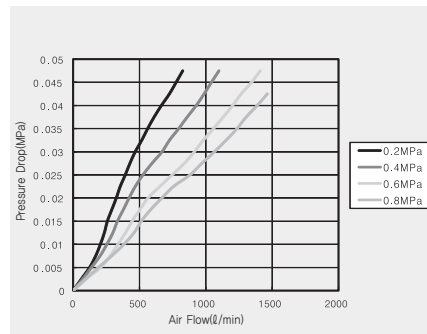
No.	Description	Material	Part No.
⑦	Damper	NBR	PL3-34-001-01
⑧	Bowl O-ring	NBR	PL3-04-001-01

Dimensions

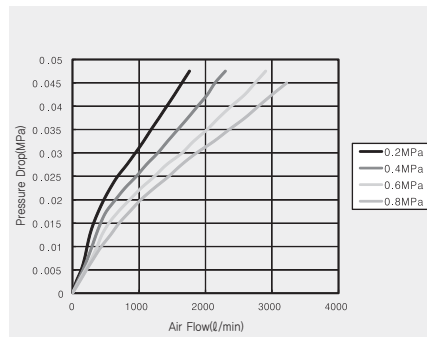


Flow Characteristics

▶ 1/4" PL3



▶ 3/8" PL3



PC2

PF2

PR2

PL2

PP2

PC3

PF3

PR3

PL3

PP3

PC4

PF4

PR4

PL4

PP4

PC5

PF5

PR5

PL5

PP5

PFH(U)2~
PFH(U)5

PPH(U)3~
PPH(U)4

PLV

PSH

PCV

MB