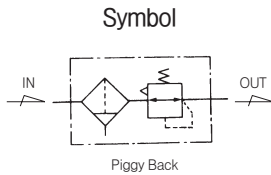


Series PP4

Piggyback 3/8" and 1/2"



Standard Specifications

| | | |
|------------------------------------|---|--|
| Fluid | Air | |
| Max. Operating Pressure (MPa) | 1.0(140psi) | |
| Proof Pressure (MPa) | 1.5(200psi) | |
| Set Pressure (MPa) | Standard | 0.05~1.0(7~140psi) |
| | Made to Order Specifications | 0.05~0.2(7~30psi), 0.05~0.4(7~60psi), 0.05~1.5(7~200psi) |
| Ambient and Fluid Temperature (°C) | -5~60(23~140°F)(Non-freezing) | |
| Flow Capacity ※ | 3/8" | 3,800(134scfm) |
| (N ℓ /min) | 1/2" | 4,700(166scfm) |
| Filtration (μm) | 5 | |
| Construction | Relieving Style | |
| Bowl Material | Polycarbonate | |
| Bowl Guard Material | Nylon | |
| Drain Capacity (cm ³) | Manual Drain : 56(1.89oz), Auto Drain : 68(2.3oz) | |
| Weight (kg) | 0.74(1.63lb) | |

※ Test conditions : Supply pressure 0.7MPa(100psi), pre-set pressure 0.6MPa(90psi)

How to Order

PP 4 — * 04 B D G — *

Series (Piggyback Unit)

Thread

| | |
|-------|--------|
| Blank | Rc(PT) |
| N | NPT |
| G | G(PF) |

Port Size

| | |
|----|-----|
| 03 | 3/8 |
| 04 | 1/2 |

Bracket Option

| | |
|-------|---------------------|
| Blank | None |
| B | Bracket + Panel Net |
| B1 | Panel Net |

Note2)

Other Option

| | | | |
|-------|-------------------------------------|------|-------------------------------|
| Blank | Set at 0 to 1.0 MPa, 5μm (Standard) | | |
| 2 | Set at 0 to 0.2 MPa | J4 | Filter element - 40μm |
| 4 | Set at 0 to 0.4 MPa | K | Built-in Check Valve |
| 15 | Set at 0 to 1.5 MPa | R | Flow Direction : Right - Left |
| E | Non-Relieving Type | T | Tamper Resistant Kit |
| J2 | Filter element - 20μm | XC16 | Copper-free |

Note1) Refer to page 935 for Built-in Check Valve, Tamper Resistant Kit.

* If ordering more than one option, indicate symbols numerically then alphabetically Ex) 2EK

* Over Max. pressure value can be set.

Pressure Gauge

| Symbol | Description | Pressure Range |
|--------|---|----------------|
| Blank | None | |
| G | Integral Pressure Gauge (W/Limit Indicator) | 1.0MPa |
| P | Pressure Gauge | 1.0MPa |
| P2 | Pressure Gauge | 0.2MPa |
| P4 | Pressure Gauge | 0.4MPa |

Drain Option

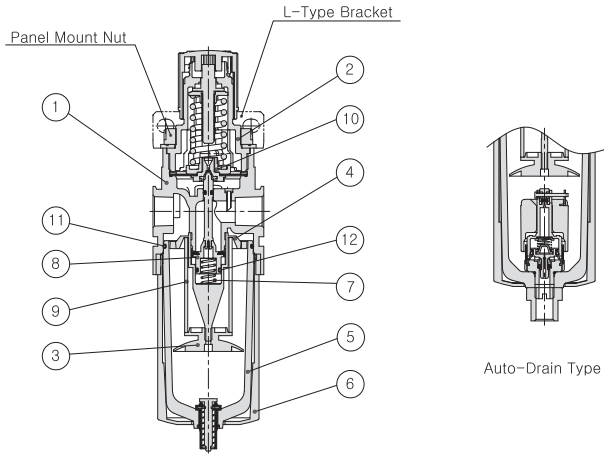
| | |
|-------|-----------------------|
| Blank | Manual Push Drain |
| D | Auto Drain (N.O Type) |

Note3)

Note3) Min. operating pressure is 0.15MPa (20psi) for Auto Drain (N.O Type)

Series PP4

Construction



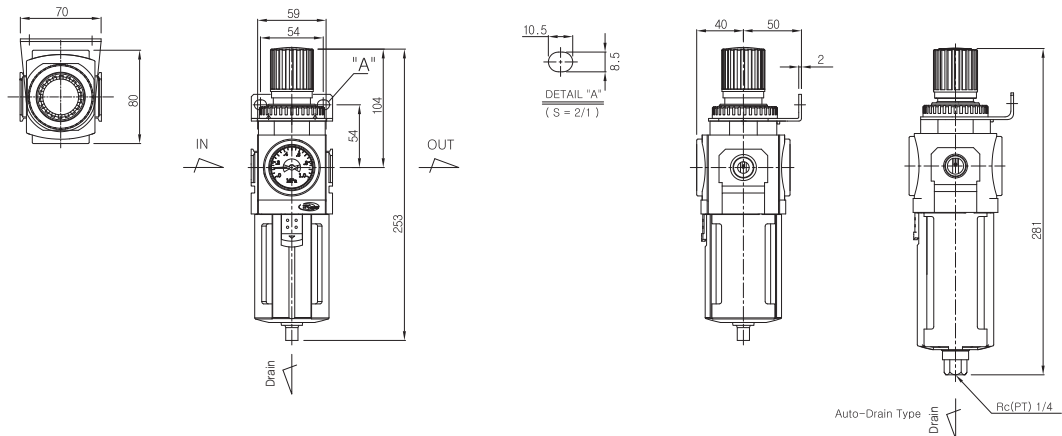
Main Parts/Parts List

| No. | Description | Material | Remark |
|-----|--------------|-----------------|--------|
| ① | Body | Aluminum | |
| ② | Bonnet | Nylon | |
| ③ | Baffle | Acetal | |
| ④ | Deflector | Acetal | |
| ⑤ | Bowl | Polycarbonate | |
| ⑥ | Bowl Guard | Nylon | |
| ⑦ | Valve Spring | Stainless Steel | |

Replacement Parts/Parts List

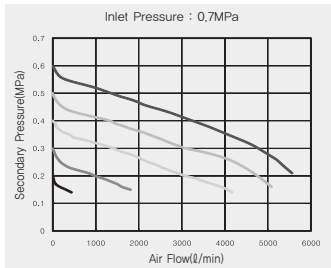
| No. | Description | Material | Part No. |
|-----|-----------------|--------------|-----------------|
| ⑧ | Valve Ass'y | Nylon+NBR | PP4-08A001-01 |
| ⑨ | Filter Element | Polyethylene | PF4-24-005-01 |
| ⑩ | Diaphragm Ass'y | Nylon+NBR | PR4-11A001-01 |
| ⑪ | Bowl O-ring | NBR | TAF4000-08-6000 |
| ⑫ | Valve O-ring | NBR | PR3-04-001-01 |

Dimensions

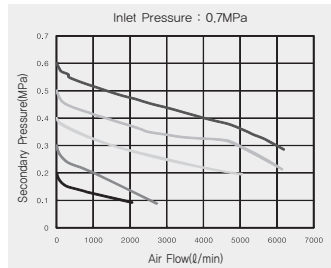


Flow Characteristics

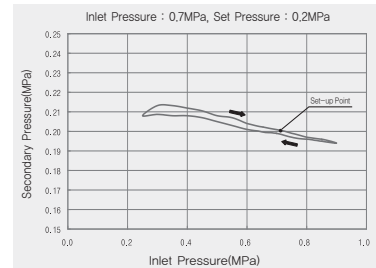
▶ 3/8" PP4



▶ 1/2" PP4



Pressure Characteristics



- PC2
- PF2
- PR2
- PL2
- PP2
- PC3
- PF3
- PR3
- PL3
- PP3
- PC4
- PF4
- PR4
- PL4
- PP4**
- PC5
- PF5
- PR5
- PL5
- PP5
- PPH(U)2~
PFH(U)5
- PPH(U)3~
PFH(U)4
- PLV
- PSH
- PCV
- MB