

PR1 Series

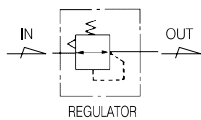
Regulator M5

Air preparation
unit

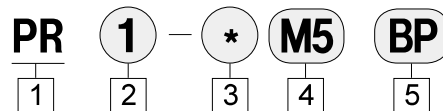
PR1 Series



Symbol



How to Order



1 Series(Regulator Unit)

2 Body Size
1 : 1/8

3 Screw
Blank : Rc
N : NPT
G : G(PF)

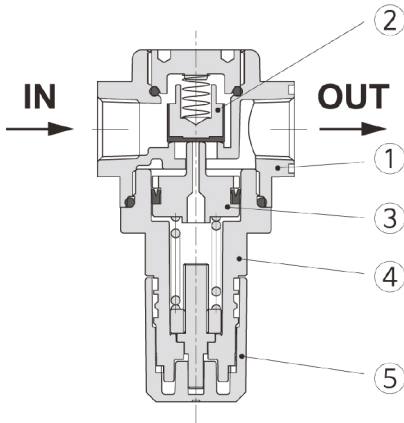
4 Port Size
M5 : M5

5 Component
Blank : Non Bracket/gauge
B : Bracket
P : Pressure gauge Exterior

Specifications

Fluid	Pressed Air
Max.operating pressure(MPa)	10bar (1,0MPa)
Proof pressure(MPa)	15bar (1,5MPa)
Ambient and fluid temperature (°C)	-5~60(With no freezing)
Set pressure(MPa)	0,5~8,5bar(0,05~0,85MPa)
Pressure gauge port size	PR1
	1/8
Contruction	Relieving type

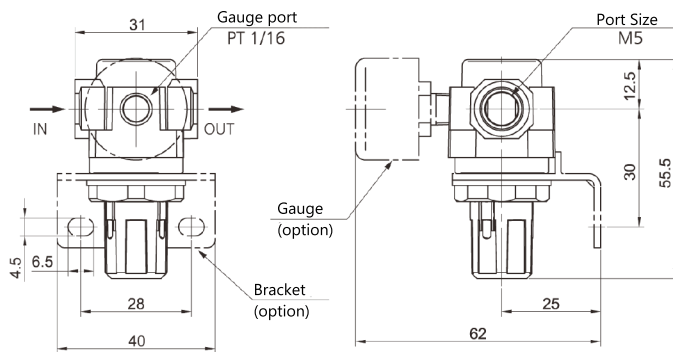
Structure



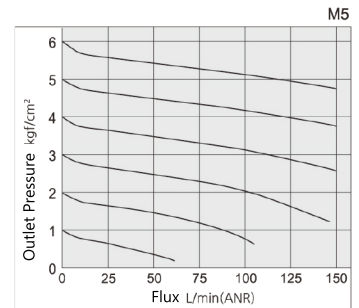
Major Parts LIST

#	Part Name	Material
①	Body	Iron die casting
②	Check Valve Ass'y	ABS
③	Piston	N66G
④	Cover	N66R
⑤	Handle	ABS

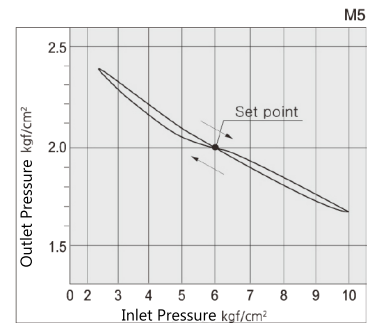
Dimensions





Flow Characteristics



Pressure Characteristics



Option	P : Isometric Gauge	B : Bracket
Product Name	 G25, R 1/16	 B120