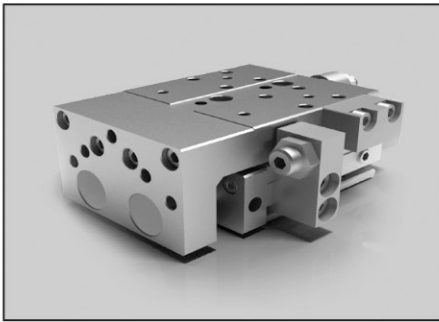


CR/CV/SC-NLPD Series

Clean Series Table Cylinder / Bore Size : Ø20, Ø25, Ø32

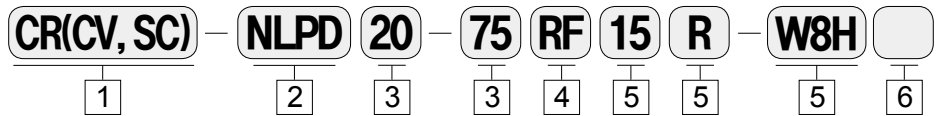
Actuator
Cylinder

CR/CV/SC-NLPD Series



- CYLINDER IN LOW PARTICLE GENERATION FOR CLEAN ROOM
- EXCLUSIVE GREASE USE. DUST GENERATION IS MINIMIZED WHEN CYLINDER IS ACTING

How to Order



1 Clean Series

CR : Relief Port Type
CV : Vacuum Suction Type
SC : Semi Clean Type
(Non Relief Port)

2 Table Cylinder

New Linnear Precision Double Rod Cylinder
Non-Lubricator is basic type

3 Bore Size

Ø20 : Ø20
Ø25 : Ø25
Ø32 : Ø32

4 Cylinder Stroke(mm)

Ø20 : Ø10, Ø20, Ø30, Ø40, Ø50, Ø75, Ø100, Ø125, Ø150
Ø25 : Ø10, Ø20, Ø30, Ø40, Ø50, Ø75, Ø100, Ø125, Ø150
Ø30 : Ø30, Ø75, Ø100

5 Adjust Bolt Option

1) Urethane Damper
RF : Front Side
RB : Rear Side
R : RF+RB Adjusting Bolt
2) Shock-absorber
SF : Front Side
SB : Rear Side
S : SF+SB adjusting Bolt

6 Adjustable Range(Optional)

5mm(Blank), 15mm, 25mm
ex) RF15, RB15, R15
※ Blank: 5mm ex) RF, RB, R

7 Auto Switch

Blank : None
W8H : Reed switch(Horizontal type)
W8V : Reed switch(Vertical type)
W9H : Solid state switch(Horizontal type)
W9V : Solid state switch(Vertical type)
W9HN : Solid(NPN), 3 Wire
W9HP : Solid(PNP), 3 Wire
W10V : Solid state switch(Vertical type)

※ Standard auto switch lead wire length is 1m, 3m leads available on all models by adding a "L" suffix to the part number.
(ex : W8HL, W9VL)

8 Number of Auto Switches

Blank : 2pcs
S : 1pc
N : Npcs

Specifications

Bore size	Ø20, Ø25, Ø32
Fluid	Air
Action	Double Acting
Operation Pressure	0.15 ~ 0.7MPa(1.5 ~ 7.1kgf/cm ²)
Proof Pressure	1.05MPa(10.7kgf/cm ²)
Ambient and Fluid Temperature	-10°C ~ 60°C(No freezing)
Piston Speed	50 ~ 500mm/s (Urethane Damper : 50 ~ 200mm/s)
Lubrication	Non-Lub
Auto Switch(Optional)	Reed Switch, Solid State Switch
Stroke Tolerance	0 ~ + 0.7mm
Option(Stroke Adjust)	Urethane Damper, Shock-absorber type(Front/Back/Both side)