

# DCV Series

Check Valve

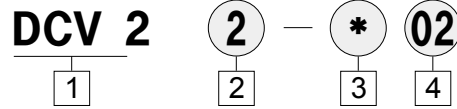
Directional Control Valve

DCV Series



- Low minimum speed (crank pressure)
- Excellent flow characteristics

## How to Order



### 1 Product Name

DCV : Check Valve

### 2 Basic Size

Size	Basic port
2	1/4
4	1/2

### 3 Screw Type

Blank : Rc

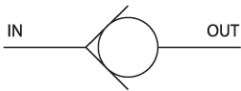
N : NPT

G : G

### 4 Port Size

Size	port size	series
01	1/8	DCV2
02	1/4	DCV2/DCV4
03	3/8	DCV4
04	1/2	DCV4

## Symbol



## Specifications

Fluid	Air				
Max. Operating Pressure	1.0				
Proof Pressure	1.5				
Min. Operating Pressure	0.02				
Ambient & Fluid Temp.	-5 to 60°C (nonfreezing)				
Series	DCV2		DCV4		
Port Size	1/8	1/4	1/4	3/8	1/2
Weight	128		44		
Effective Area	22	35	41	80	116