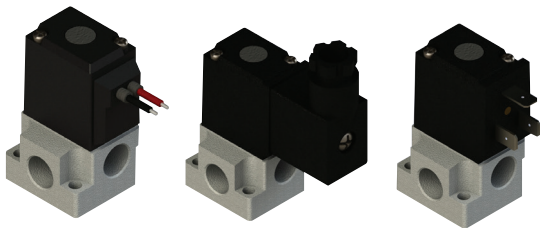


# RTV307 Series

Universal / 3 Port direct acting poppet type

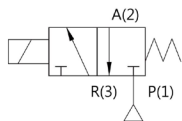


- Direct acting type valve
- Available for various circuit configuration
- Non-Lube type
- Universal type valve
- Convenient mounting (Upper side and Lower side)

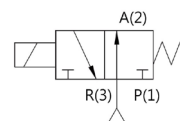
★ Universal type valve

RTV307 valve can supply and exhaust the air through any port among 3 ports freely.  
Below 6 operation types are available as you prefer.

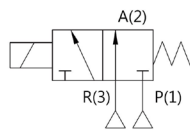
### 1. 3-Port Valve(N.C Type)



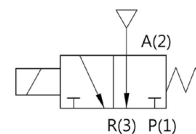
### 2. 3-Port Valve(N.O Type)



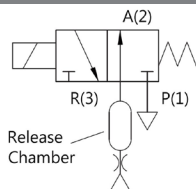
### 3. Selector Valve



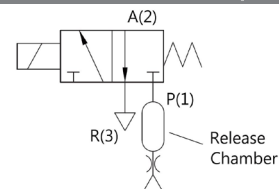
### 4. Divider Valve



### 5. Vacuum / Release Valve(N.C Type)



### 6. Vacuum / Release Valve(N.O Type)



## How to order

**RT V 307 - 5 G - 01**

1 2 3 4 5

1 3 Port direct acting type valve  
307 series

2 Body type  
V : Body ported

3 Voltage  
1 : AC110V  
2 : AC220V  
5 : DC24V  
6 : DC12V

4 Electrical entry type

G : Grommet Type  
GS : Grommet Type (With lamp)  
D : Din terminal type  
DZ : Din terminal type (With lamp and surge protection circuit)  
N : without Din Terminal Lamp

5 Port size

01 : PT(Rc) 1/8  
02 : PT(Rc) 1/4

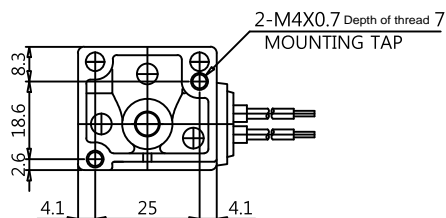
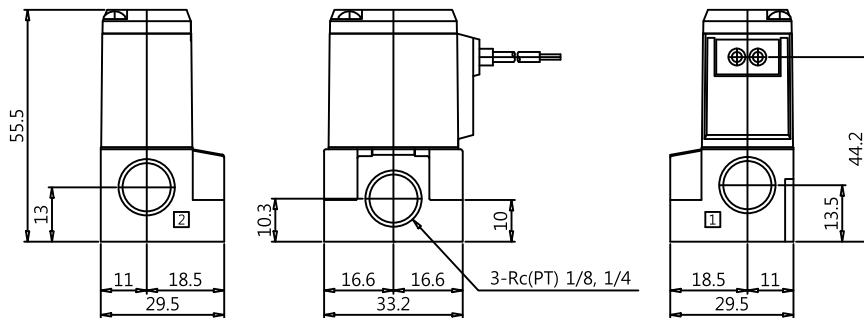
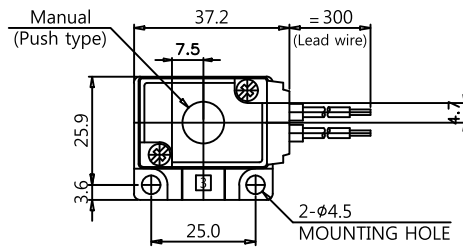
# RTV307 Series

## Specification

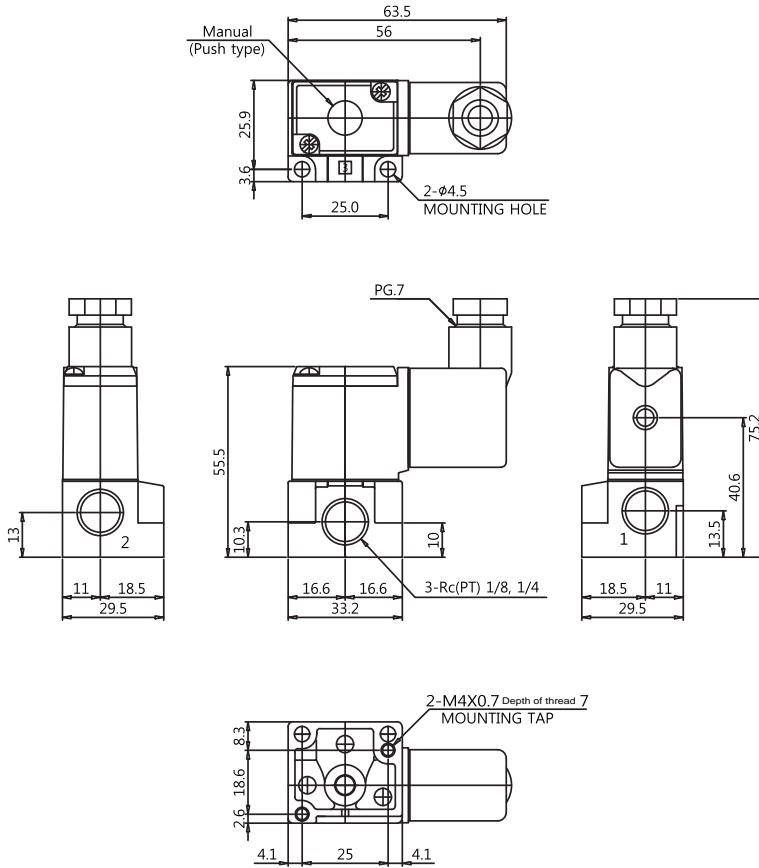
Valve structure	Direct acting poppet type
Fluid	Air, Inert gas
Operating pressure	-100 kPa ~ 0.7 Mpa (-0.1 ~ 7.0 kgf/cm <sup>2</sup> )
Effective orifice	4.0 mm <sup>2</sup> (Cv : 0.22)
Ambient and operating temp. of fluid	Max. 50°C
Lubrication	-
Protection	Dustproof
Coil rated voltage	AC110V, 220V, DC 12V, 24V (DC Duty Cycle 100%)
Allowed voltage fluctuation	± 10% of rated voltage
Coil insulation type	Insulation Class B or equivalent
Power consumption (W)	DC: 4W, AC: 5.7VA

Note1) Under 5oC of low ambient temperature condition, be prepared for condensation and freezing

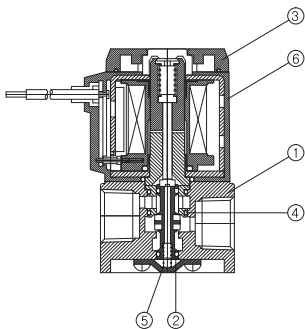
## Dimensions for Grommet type



Dimensions for DINTERMINAL D(DZ) TYPE



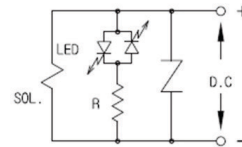
Structure



No.	Part name	Material
①	BODY	ALDC12
②	SPOOL	AL
③	END COVER	PLASTIC
④	O-RING	NBR
⑤	SPRING	SUS
⑥	COIL ASSY	-

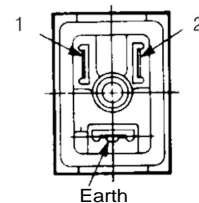
Lamp surge voltage protection circuit

DC With Lamp & Surge Suppresion ( PS )



Lamp surge voltage protection circuit

DIN Terminal block attachment



Block No.	1	2
DIN	+	-