

# TFVM220~230 Series

Foot Valve

Directional Control Valve

TFVM220~230 Series



## How to Order

**TFVM 2** **20** — **02**

1 2 3 4

1 Foot Valve

2 No. of Port

20 : 2 ports  
30 : 3 ports (residual pressure exhaust hole included)

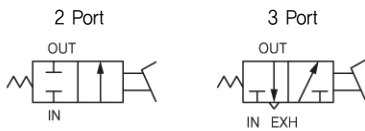
3 Screw Type

Blank : Rc(PT)  
N : NPT  
G : G(PF)

4 Port Size

02 : 1/4

## Symbol



## Specifications

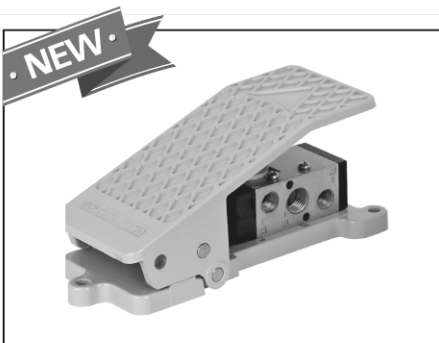
Fluid	Air
Operating Pressure Range	0~10bar (0~1 MPa)
Ambient & Fluid Temp.	-5 to 60°C (nonfreezing)
Effective Area	19mm <sup>2</sup> (1,0)
Lubrication	unnecessary (Turbine Oil Only)
Port Size	1/4

# TFVM250 Series

Pilot Type Foot Valve

Directional Control Valve

TFVM220~230 Series



## How to Order

**TFVM 2** **50** — **03**

1 2 3 4

1 Foot Valve

2 No. of Port

50 : 5 ports

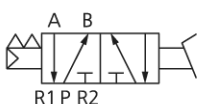
3 Screw Type

Blank : Rc(PT)  
N : NPT  
G : G(PF)

4 Port Size

02 : 1/4  
03 : 3/8

## Symbol



## Specifications

Model	TFVM250-02	TFVM250-03
Fluid	Air	
Operating Pressure Range	0~10bar (0~1 MPa)	
Ambient & Fluid Temp.	-5 to 60°C (nonfreezing)	
Effective Area	19mm <sup>2</sup> (1,0)	45mm <sup>2</sup> (2,4)
Lubrication	unnecessary (Turbine Oil Only)	
Port Size	1/4	3/8