

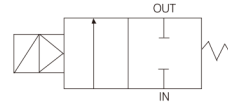
# DWH Series

## High Pressure Valve

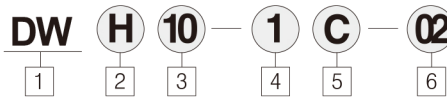


- Piston pilot type
- Water hammer relief
- Available in max. pressure, 20kgf/cm<sup>2</sup>
- Coil damage proof

Symbol  
Pilot type



## How to order



**1** DW valve for high pressure

**2** Flange type

H : High pressure  
HF : High pressure with flange

**3** Orifice size

10 : Ø10  
15 : Ø15  
20 : Ø20  
25 : Ø25  
32 : Ø32  
40 : Ø40  
50 : Ø50

**4** Voltage

1 : AC110V, 60/Hz  
AC100V, 50/60Hz  
2 : AC220V, 60Hz  
AC220V, 50/60Hz  
5 : DC24V  
9 : DC12V

**5** Electrical entry

C : Console Box Type  
G : Grommet Type

**6** Port size

02 : PT 1/4  
03 : PT 3/8  
04 : PT 1/2  
06 : PT 3/4  
10 : PT 1  
12 : PT 1/4  
14 : PT 1 1/2  
20 : PT 2

# DWH Series

## Caution

Be sure to have a full understanding before use and refer to safety cautions and common cautions.

## Piping

## Caution

- For steam use, fitting and tube should be heat-resistant type. (Insertion Fitting, Teflon tube etc)

## Specifications

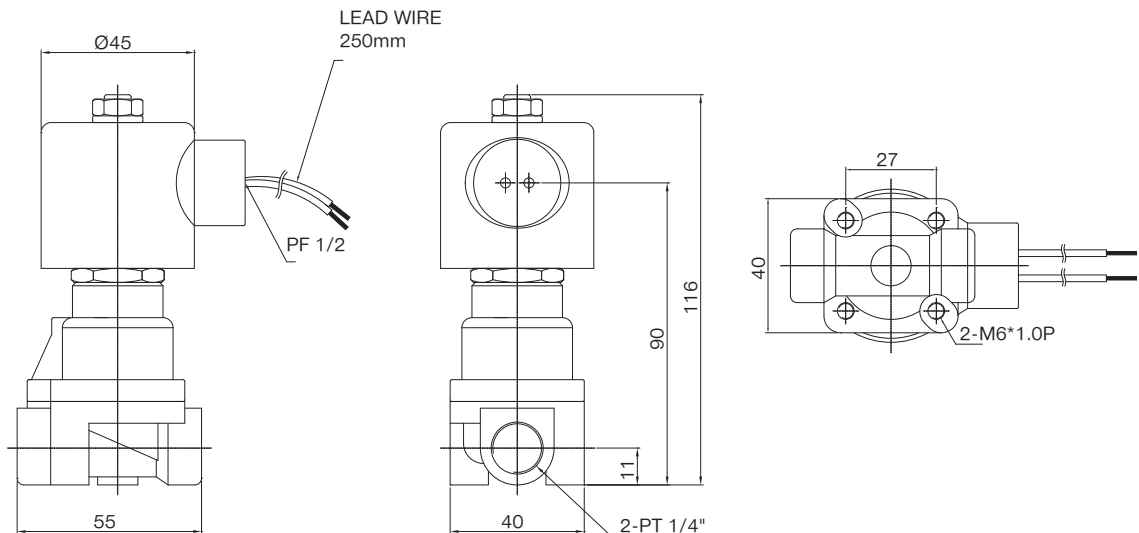
Fluid	Air, Water, Oil
Fluid temperature	0-60°C
Ambient temperature	50°C (MAX)
Operating pressure range	0.5-20kgf/cm <sup>2</sup>
Body material	BRASS
Power consumption	AC, DC : 14W
Voltage compensation rate	±10%(AC), ±5%(DC)
Seal	NBR + SUS 304 PISTON

## Weight

Orifice size	Port size	Standard type	Flange type
Ø10	PT 1/4	0.7kg	
Ø10	PT 4/8	0.7kg	
Ø15	PT 1/2	0.9kg	
Ø20	PT 3/4	1.55kg	
Ø25	PT 1	1.57kg	3.9kg
Ø32	PT 1 1/4	2.55kg	6.6kg
Ø40	PT 1 1/2	2.75kg	6.55kg
Ø50	PT 2	3.92kg	8.5kg

## High pressure valve

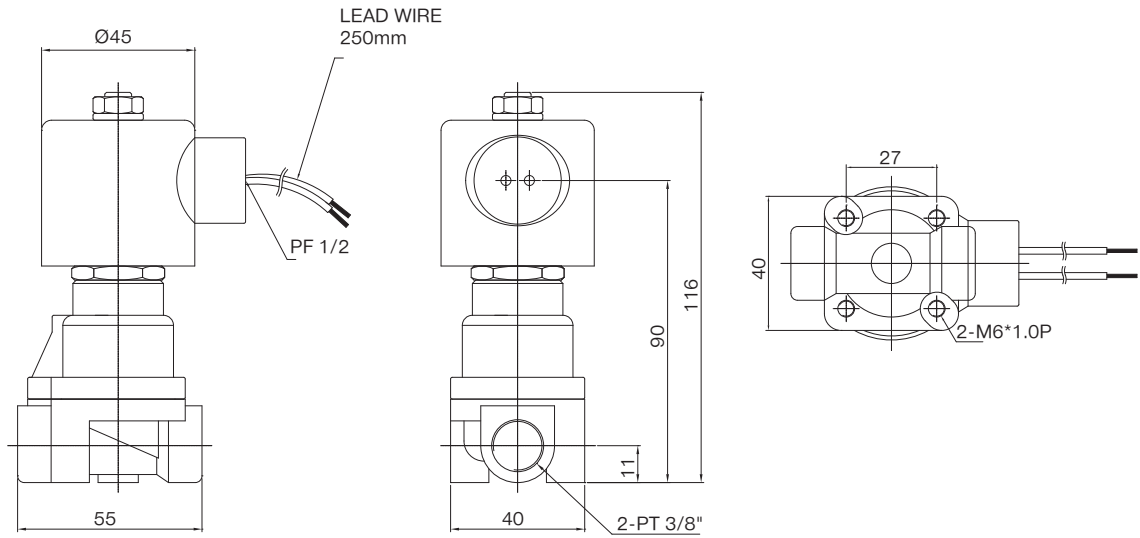
DWH10-00-02



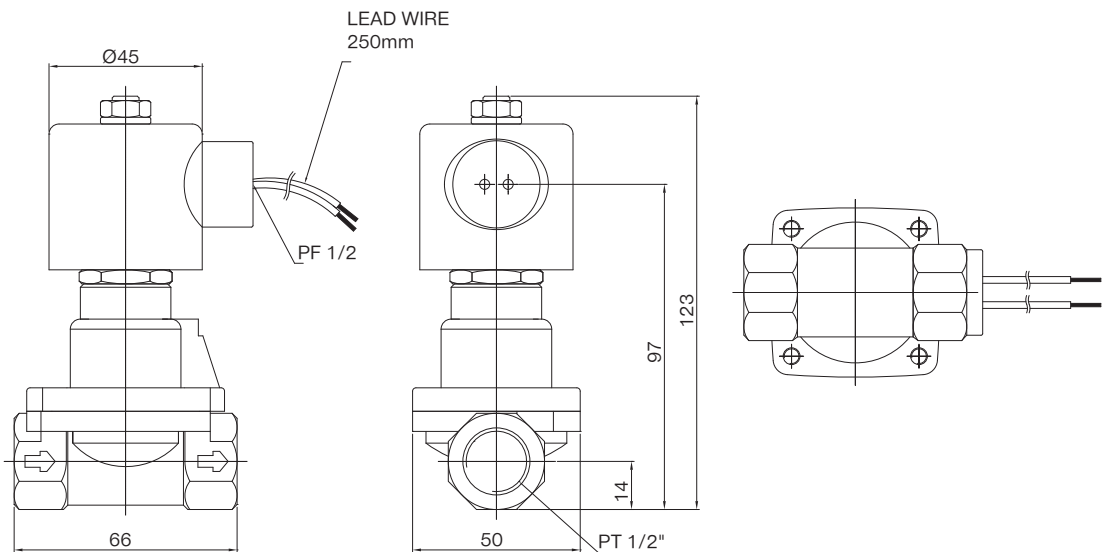
# High pressure valve DWH Series

## High pressure valve

DWH10-00-03



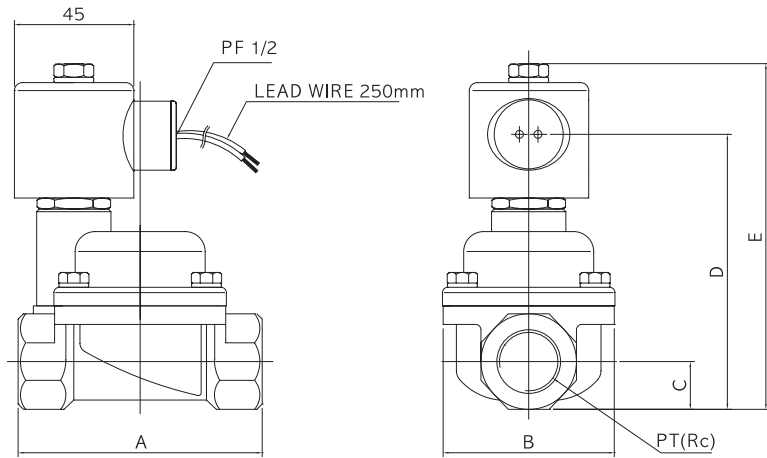
DWH15-00-04



# DWH Series

## High pressure valve

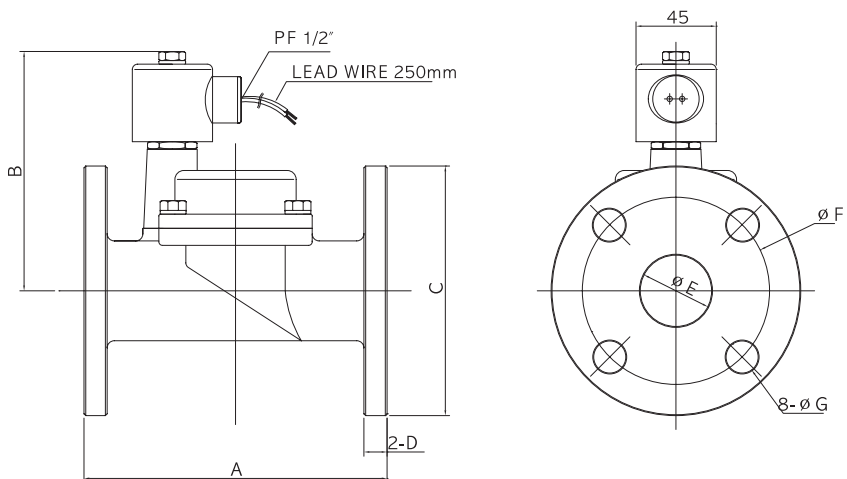
### DWH32~50



Orifice size	Port size	A	B	C	D	E
Ø32	PT11/4	122	86	26	13P	160
Ø40	PT11/2	123	87	29	142	164
Ø50	PT2	140	100	36	158	180

## Flange type

### DWHF25~50



Orifice size	Port size	A	B	C	D	E	F	G
Ø25	25A	127	115	125	13	25	90	18
Ø32	32A	170	135	135	13	45	100	18
Ø40	40A	170	135	140	13	40	105	18
Ø50	50A	180	145	155	14	50	120	18