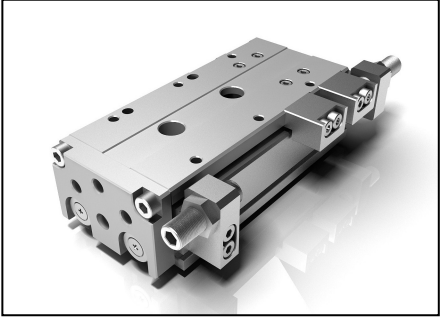


Precision Table Cylinder Series NLPD

Bore Size : $\varnothing 6, \varnothing 8, \varnothing 12, \varnothing 16, \varnothing 20, \varnothing 25, \varnothing 32$



- Actualized high strength and high precision with adopting the linear guide of circulation type
- Increased the attachment surface of Work and improved the stability for installation
- Comprised of diverse options
- Increased output for dual cylinder

How to Order

NLPD 12 — 75 RF15 R — W8H S

1 2 3 4 5

1 Bore Size

06-6mm
08-8mm
12-12mm
16-16mm
20-20mm
25-25mm
32-32mm

2 Stroke(mm)

$\varnothing 6-10, 20, 30, 40, 50$
 $\varnothing 8-10, 20, 30, 40, 50, 75$
 $\varnothing 12-10, 20, 30, 40, 50, 75, 100$
 $\varnothing 16-10, 20, 30, 40, 50, 75, 100, 125$
 $\varnothing 20-10, 20, 30, 40, 50, 75, 100, 125, 150$
 $\varnothing 25-10, 20, 30, 40, 50, 75, 100, 125, 150$
 $\varnothing 32-30, 75, 100$

3 Stroke adjusting bolt and scope of adjustment (Option)

1) Rubber damper type
RF : Adjusting bolt for forward motion end
RB : Adjusting bolt for backward motion end
R : Both ends Adjusting bolt (RF+RB)

Adjustment length : 5mm, 15mm, 25mm
※ Blank : 5mm
- Assembly position

Blank : Left side (Standard seen from the front)
R : right side

2) Shock-absorber attached type

SF : Adjusting bolt for forward motion end
SB : Adjusting bolt for backward motion end
S : Both ends Adjusting bolt (SF+SB)

Adjustment length : 5mm, 15mm, 25mm
※ Blank : 5mm

※ Shock-absorber is not available with NLPD06

Blank : Left side (Standard seen from the front)
R : right side

3) Metal Stopper

MF : Adjusting bolt for forward motion end
MB : Adjusting bolt for backward motion end
M : Both ends Adjusting bolt (MF+MB)

Adjustment length : 5mm, 15mm, 25mm

4 Auto switch

Blank : None
W8H : Reed switch (Horizontal type)

W8V : Reed switch (Vertical type)
W9H : Solid state switch (Horizontal type)

W9V : Solid state switch (Vertical type)

W9HN : Solid state switch, 3 line type

W10V : Solid state switch (Vertical type)

W9HP : Solid state switch, 3 line type

※ In case that the length of lead line is 3m, indicate by adding 'L' to the end of item no.
In case of no-symbol, 1m standard (Example : W8HL, W9VL)
[For NLPD08 model, only the horizontal types (H type) can be applied]

5 Number of switches

Blank : 2 pcs.
S : 1 pc.
N : N pcs.

Specification

Bore Size	6, 8, 12, 16, 20, 25, 32
Fluid	Air
Operating	Double-action type
Operating pressure	0.15~0.7Mpa(1.5~7kgf/cm ²)
Proof pressure	1.05Mpa(10.7kgf/cm ²)
Ambient and fluid temperature	-10~60°C (No freezing required)
Piston speed	50~500mm/s (Metal Stopper : 50~200mm/s)
Lubrication	None
Auto switch (option)	Reed switch : DC(24V)/AC(110V) Solid state switch : DC(24V)
Stroke length tolerance	0~+1mm
Option (Stroke adjust)	Urethane damper type/Shock-absorber attached type/Metal Stopper

Option

Stroke Adjuster attached

- Forward motion end[RF]
- Backward motion end[RB]
- [R] Both ends

※ Scope of adjustment 0~5mm
Basic specification

